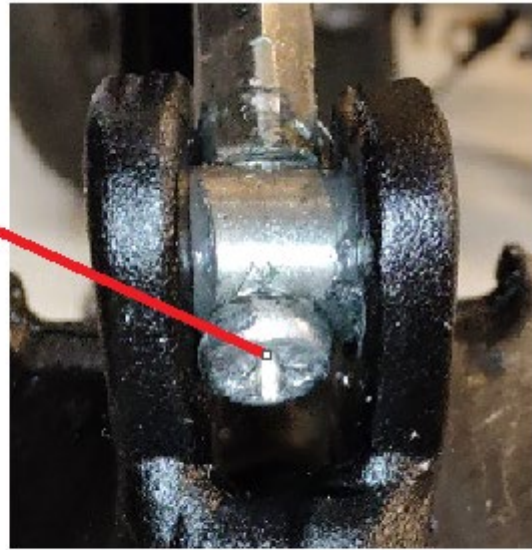

CB1 Adjustments

Front bar folding mechanism

If the front bare folding mechanism is too loose or thigh then you will need to adjust the metal pin.

First untighten the screw on the photo below.



Now you can adjust the metal pin. To tighten turn with the clock. To loosen turn anticlockwise.

Test if it is correct. The lock should be tight when closed. Tighten the screws again.

