

HOME PROTECTOR



Colour Surveillance Camera USER GUIDE

AFTER SALES SUPPORT

21452



GB

0800 046 5805

IRE

1890 823 835



www.envivo.nu
support@envivo.nu

MODEL:
1591

10/2019

3

YEAR
WARRANTY



PRODUCED IN CHINA FOR:
ALDI STORES LTD, PO BOX 26, ATHERSTONE,
WARWICKSHIRE, CV9 2SH.

ALDI STORES (IRELAND) LTD,
PO BOX 726, NAAS, CO. KILDARE.
Visit us at www.aldi.com

10/2019 21452

CONTENTS

Introduction.....	4
Welcome	4
General Information and Safety Instructions	5
Warning	5
Caution	5
Assembly and Parts List.....	7
Getting Started	8
Features.....	8
Instructions.....	8
Camera Placement.....	8
Adjusting camera angle	9
Connections	10
Basic System Connection	10
Extended System Connection	11
FAQ.....	12
Other Useful Information	12
Specifications.....	12
Warranty Conditions.....	13
Disposal	14
Warranty Card	16

Introduction

Keep an eye on your house, garage, car and visitors from the safety of your own home with this security camera with night vision function. Simply connect it to your TV or DVR to receive live pictures.

Welcome

You have made an excellent choice with the purchase of this quality Home Protector product.

By doing so you now have the assurance and peace of mind, which comes from purchasing a product that has been manufactured to the highest standards of performance and safety, supported by the high quality standards of Aldi.

We want you to be completely satisfied with your purchase, so this Home Protector product is backed by a comprehensive manufacturer's 3-year warranty and an outstanding after sales service through our dedicated Helpline.

We hope you will enjoy using your purchase for many years to come.

If you require technical support or in the unlikely event that your purchase is faulty please telephone our Helpline for immediate assistance. Faulty product claims made within the 3 year warranty period will be repaired or replaced free of charge provided that you have satisfactory proof of purchase (keep your till receipt safe!). This does not affect your statutory rights.

However, be aware that the warranty will become null and void if the product is found to have been deliberately damaged, misused or disassembled.

General Information and Safety Instructions

Read all safety information below and operating instruction before using this Colour Surveillance Camera to avoid any damages to your device.

Do not drop, disassemble, open, crush, bend, deform, puncture, shred, microwave, incinerate, paint, or insert foreign objects into this device.

Warning



The symbol is intended to alert the user to the presence of important operating and maintenance (servicing) instructions in the literature accompanying the appliance



The symbol is intended to alert the user to the presence of uninsulated "dangerous voltage" within the products enclosure that may be sufficient magnitude to constitute a risk of electric shock to persons. Any changes or modifications to the construction of this product, which are not expressly approved by the person responsible for compliance, could void the warranty.

Caution

Hazard, Safety and Warning notices

Incorrect use of the camera and accessories can be dangerous for you and others and can damage or destroy the camera. We therefore ask you to read and strictly observe the following hazard, safety and warning notices.

Intended use

This surveillance camera is solely intended for the image surveillance of exteriors. The specified maximum ranges are approximate and can be impaired, depending on the environment and natural weather conditions. You are responsible for ensuring that no personal rights of third parties are violated when using the surveillance camera. The surveillance camera has solely been designed for private use.

Hazardous for children and persons with limited ability to operate electronic equipment

The camera, accessories and packaging are not toys for children to play with and should therefore be kept away from children. There could be a risk of electrocution, poisoning and suffocation.

The camera and accessories may not be used by children or persons with a limited ability of operating equipment. The camera may not be used by persons (including children) with limited physical, sensory or mental capacities or limited experience and/or knowledge. The camera, the receiver and mains adapter may only be used by persons that are physically or mentally able to operate the equipment safely, unless they are supervised by a person responsible for their safety or have been instructed by this person as to how to use the equipment. Children should be supervised to ensure that they are not playing with the equipment.

1. Please keep the glass surface of the camera clean to ensure operational efficiency. DO NOT use abrasive cleaning agents, alcohol or similar. DO NOT use sharp edged tools, or similar to remove debris from the device.
2. Choose a suitable location for the security device, ensuring that it is positioned away from sources of strong light. This will affect the image quality and may cause damage to the units CCD (Charge-coupled Device).
3. Do not touch the CCD sensor directly with your finger. If necessary use soft damp cloth to wipe off the dust.
4. If the product becomes damaged DO NOT use. Contact the number provided on your warranty card or a qualified electrician if the item requires repairing. Do not open the camera as this will void any warranty.

Electrical hazard

Switch off camera if a foreign body or liquid has entered the camera. Wait until completely dry, there is danger of fire and electrocution.

Switch off if camera or receiver has been dropped or if housing is damaged, there is danger of fire and electrocution.

The camera and its components may not be dismantled, modified or repaired, there is danger of fire and electrocution.

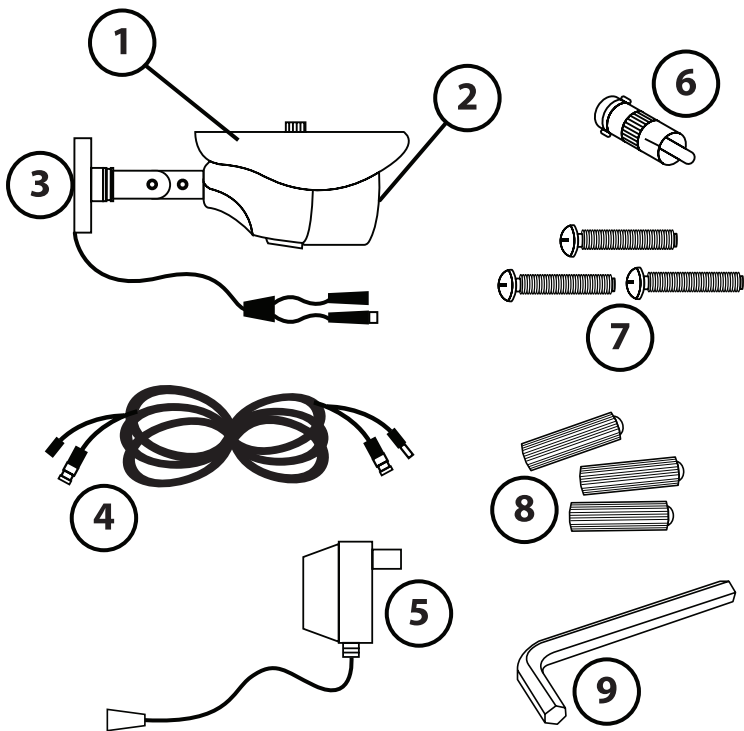
Only use the supplied power supplies or power supplies with the same specifications. Only connect power supplies to the mains voltage specified on the rating plate.

The external flexible cable or cord of this transformer cannot be replaced; if the cord is damaged, the transformer shall be scrapped. Replace with the same type of power supply.

Check that all used mains sockets are always accessible so that the power supply can be quickly interrupted when necessary. The device is disconnected from the mains by pulling out the plug from the mains socket.

Assembly and Parts List

1	CCTV Camera	4	18m extension cable	7	Screws (3 pcs.)
2	Lens	5	Power adaptor	8	Screw plugs (3 pcs.)
3	Bracket	6	Video adaptor	9	Hex key



Getting Started

NOTE: Night view video images will be shown in black and white. Night view will not work if pointed into an open area such as a field or large car park, point the camera into a doorway or closed area for best performance. Infra-Red LEDs will glow slightly Red during operation. This is normal during night time.

Please note that this product is designed solely for private use and consideration should be given when choosing a suitable location for the product.

Features

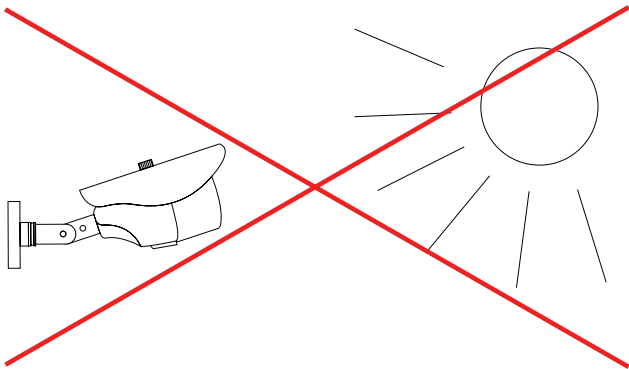
Wired colour CCTV camera with night vision.
Live view on TV or Record to DVR.

Instructions

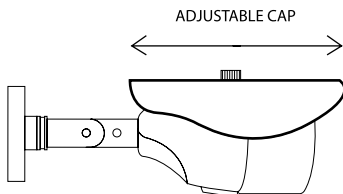
Camera Placement

Always test the camera at the desired position before mounting it.

The camera should be mounted so that it does not face a strong light source, as this can give distorted colours and glare during certain situations. Position the camera below the horizon to eliminate sunlight glare. Colour distortion is most likely caused by strong night light. Always be aware of east and west when mounting the camera. If camera is facing east or west, there is a good chance you will see unwanted glare.

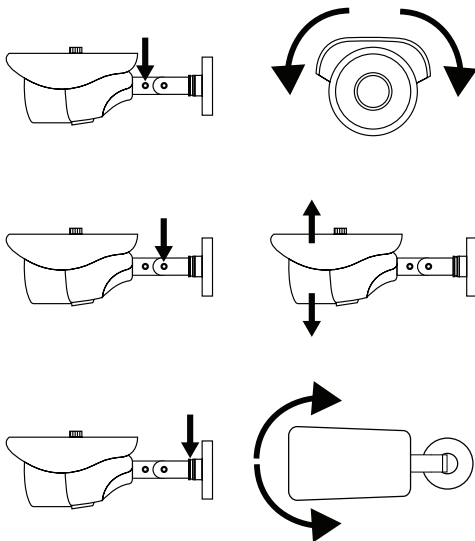


It is possible to adjust the cap of the camera. If you get distorted colours or glare then try and adjust the cap of the camera, as this will help in many situations.



Adjusting camera angle

There are 3 different ways to adjust the camera to get the desired angle. Loosen the screw, adjust the camera angle and tighten the screw.



Mounting Camera

Before you affix the camera in position, please ensure the cable is of adequate length to reach the Monitor or DVR.

NOTE: It is recommended that you test the product before final installation.

1. Ensure that the surface you want to mount the camera on is solid and can support the weight of the CCTV Camera.
2. Accurately mark on the wall the position of the holes to be drilled.
3. Drill the holes to the correct depth in the wall, as indicated by the plugs.
4. Insert plugs into the drilled holes.
5. Secure the camera to the wall using the provided screws.

Connections

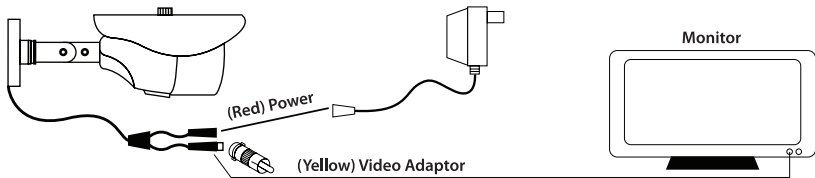
This CCTV Camera can be used in two different ways. Connected directly to a monitor (not included) for live video from the camera (Basic System Connection).

NOTE: Works for most televisions, for further information please visit our webpage.

It is also possible to connect the CCTV Camera to a DVR (not included) if you already have a DVR and other CCTV Cameras, and want to use this CCTV Camera as an extra camera for your existing DVR Kit. This will allow you to record video from the CCTV and watch the video remotely (Only works on some DVRs) (Extended System Connection).

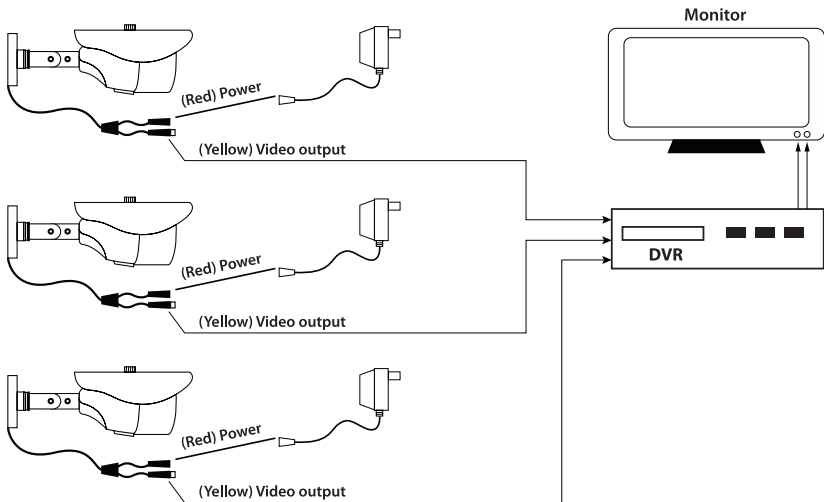
Basic System Connection

Connect the supplied extension cable to the CCTV Camera cable. Connect the different plugs with the corresponding colours. The yellow cable is video and the red cable is Power. Connect the small metal adaptor to the yellow cable, so you will be able to connect it to a monitor (not included). Now connect the yellow (video) to your monitor. Connect the red cable to the supplied power adaptor. The CCTV Camera is now ready for use, and you will be able to see live video on the monitor (not included).



Extended System Connection

Connect the supplied extension cable to the CCTV Camera cable. Connected the different plugs with the corresponding colours. The yellow cable is video and the red cable is power. Now connect the yellow (video) to your DVR (not included). Connect the red cable to the supplied power adaptor. The CCTV Camera is now ready for use, and you will be able to record video from the camera through your DVR (not included).



FAQ

Fault	Possible cause	Remedy
No transmission	Connected to power?	Check mains connection
	Display unit incorrectly set up?	Check settings
Bad reception	Interference on transmission channel?	Check connection cables or DVR box
Distorted colours or glare on the picture	A light source is causing this	Adjust the camera cap, or reposition the camera

Other Useful Information

Specifications

Camera Sensor:	700 TV Line
Night Vision:	Up to 20m
Night Vision LEDs:	36 Infrared LEDs
Light Sensitivity (Lux):	0.01 (0 Lux when IR on)
TV system:	PAL (25fps@720P)
Dust/Weather resistant (IP):	IP65
Power Supply:	12V / 500mA
Power Consumption:	Max 2.5W

Warranty Conditions

Dear Customer,

The Aldi warranty offers you extensive benefits:

Warranty period: **3 years** from the date of purchase
 6 months for wear parts and consumables under normal and proper conditions of use (e.g. rechargeable batteries).

Costs: Free repair/ exchange or refund.
 No transport costs.

ADVICE: Please contact our service hotline by phone or email before sending in the device. This allows us to provide support in the event of possible operator errors.

In order to make a claim under the warranty, please send us:

- together with the faulty item the original receipt and the warranty card properly completed.
- the faulty product with all components included in the packaging.

The warranty does not cover damage caused by:

- Accident or unanticipated events (e.g. lightning, water, fire).
- Improper use or transport.
- Disregard of the safety and maintenance instructions.
- Other improper treatment or modification.

After the expiry of the warranty period, you still have the possibility to have your product repaired at your own expense. If the repair or the estimate of costs is not free of charge you will be informed accordingly in advance.

In the event that a product is received for repair, neither the service company nor the seller will assume any liability for data or settings possibly stored on the product by the customer.

Symbol Explanation



Transformer is only intended for indoor use.

Disposal



The device must not be disposed of together with domestic waste. If you want to dispose of the device, do it the environmentally friendly way by bringing it to a public waste centre.



The packaging material is partly recyclable. Dispose of the packaging in an environmentally friendly way by bringing it to a public collection centre.

Great care has gone into the manufacture of this product and it should therefore provide you with years of good service when used properly. In the event of product failure within its intended use over the course of the first 3 years after date of purchase, we will remedy the problem as quickly as possible once it has been brought to our attention. In the unlikely event of such an occurrence, or if you require any information about the product, please contact us via our helpline support services, details of which are to be found both in this manual and on the product itself.

If you are not entirely satisfied with this product please return it to the store where it was purchased and we will be pleased to replace or refund it. This does not affect your statutory rights.

PRODUCED IN CHINA FOR:

ALDI STORES LTD. PO BOX 26. ATHERSTONE.
WARWICKSHIRE, CV9 2SH.

ALDI STORE (IRELAND) LTD.
PO BOX 726, NAAS, CO. KILDARE.
Visit us at www.aldi.com

HOME PROTECTOR SURVEILLANCE CAMERA

Your details:

Name _____

Address _____



_____ E mail _____

Date of purchase* _____

*Please keep your receipt of purchase to validate your product's warranty. No need to register the product.

Location of purchase _____

Description of malfunction:

In case of malfunction, return your completed warranty card to:

Accession ApS
Vandmanden 34
9200 Aalborg SV
Denmark
E-mail: support@envivo.nu

AFTER SALES SUPPORT



0800 046 5805  www.envivo.nu
1890 823 835  support@envivo.nu

MODEL: 1591 PRODUCT CODE: 21452 10/2019

Phone lines available Monday to
Friday, 9am - 14pm.
Calls cost 5p per minute from a
landline, calls from mobiles may
vary.

3

YEAR WARRANTY